



GOBIERNO
DE ESPAÑA

MINISTERIO
DE CIENCIA, INNOVACIÓN
Y UNIVERSIDADES



cién
Fundación Centro Investigación
Enfermedades Neurológicas



Fundação
Champalimaud

INTERNATIONAL CONGRESS ON NEURODEGENERATIVE DISEASES

September 19–21, 2024
Champalimaud Foundation
Lisbon, Portugal

Image: Dancing Astrocytes

Accreditation requested for the International Congress on Neurodegenerative Diseases of the Fundación CIEN with the reference number 57/164553.9/24 to the Commission for the Continuing Training of Health Professions of the Community of Madrid.

Early detection of the pathological components leading to cognitive deterioration

08.30 - 09.00

REGISTRATION

09.00 - 11.30

SCIENTIFIC SESSION I: NEUROPATHOLOGY

We will start with a neuropathology session proposing that co-pathology is the norm in dementia, and most patients have several components: tau, amyloid, TDP-43, alpha-synuclein

CHAIRPERSON:

ALBERTO RÁBANO

BTCIEN-Fundación CIEN, Madrid. Spain.

SANDRA TOMÉ

KU-Leuven, Belgium.

The impact of TDP-43 pathological synergies in Alzheimer's Disease

GABOR KOVACS

Laboratory Medicine & Pathobiology. University of Toronto. Canada.

Interpretation of mixed pathologies (On-Line)

DIEGO SEPÚLVEDA

UKE Hamburg. Germany.

New insights in mechanisms for resistant and resilience in familial Alzheimer's disease brains

ED LEIN

Allen Institute, Seattle. USA.

Single cell transcriptomics & disease progression in Alzheimer's Disease

11.30 - 12.00



COFFEE BREAK & POSTERS

SCIENTIFIC PROGRAM

Early detection of the pathological components leading to cognitive deterioration

12.00 - 13.00

SCIENTIFIC SESSION II: GENETIC VARIABILITY

In the following session, we will address how genetic variability is associated with the risk of AD and some of the most frequent co-pathologies (alpha-synuclein, TDP43, vascular...) and how it can potentially be used for diagnostic and/or risk classification. We will also explore brain resilience from a genetic perspective.

CHAIRPERSON:

AGUSTÍN RUIZ

Fundació ACE-CIBERNED, Barcelona. Spain.

ALFREDO RAMÍREZ

Cluster of Excellence for Aging Research. University of Cologne. Germany.

Inflammatory pathways operating at the intersection of ageing and Alzheimer's disease modulate the speed of cognitive decline

HENNE HOLSTEGE

Alzheimer Center Amsterdam. VUmc. Amsterdam UMC. Netherlands.

How genetics help to maintain a young and healthy brain: lessons from cognitively healthy centenarians

13.00 - 15.00



LUNCH & POSTERS

Early detection of the pathological components leading to cognitive deterioration

15.00 - 16.30

SCIENTIFIC SESSION III: NEUROIMAGING

We will deepen into neuroimaging techniques for detecting different dementia-related brain alterations reflecting distinct pathologic components.

CHAIRPERSON:

MICHEL GROTHE

Fundación CIEN, Madrid. Spain.

DAVID WOLK

Penn Alzheimer's Disease Research Center. University of Pennsylvania. USA.

Neuroimaging Clues to LATE and Other Common AD Co-Pathologies

JESÚS SILVA

Fundación CIEN, Madrid. Spain.

Hypometabolic signatures of LATE-NC and Lewy Body pathology. Unveiling the heterogeneity of amnesic syndromes

LAURA JONKMAN

Amsterdam Neuroscience - Brain Imaging (VUmc). Amsterdam UMC. Netherlands.

From MRI to microscope: translating neuropathology

16.30 - 17.00



COFFEE BREAK & POSTERS

Early detection of the pathological components leading to cognitive deterioration

17.00 - 18.30

SCIENTIFIC SESSION IV: BIOMARKERS

Discussing the detection of neuropathological components in the periphery using biochemical markers

CHAIRPERSON:

PASCUAL SÁNCHEZ JUAN

Fundación CIEN, Madrid. Spain.

GEMMA SALVADÓ

Clinical Memory Research. Lund University. Sweden.

Current status of fluid biomarkers in research, clinical setting and trials

ANJA SCHNEIDER

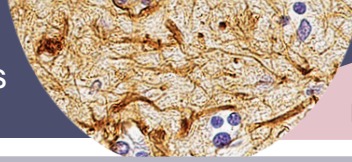
Translational Dementia Research. German Center for Neurodegenerative Diseases-DZNE. University of Bonn. Germany.

Extracellular vesicle biomarkers in neurodegenerative diseases

MARC SUÁREZ-CALVET

Barcelona Beta Brain Research Center. Hospital del Mar, Barcelona. Spain.

Blood-based Biomarkers in Cognitively Unimpaired Individuals at-risk of Alzheimer's disease



Personalized Interventions. Secondary prevention

09.30 - 11.00

SCIENTIFIC SESSION V: PHARMACOLOGICAL INTERVENTION

We will discuss pharmacological interventions, specifically tackling some of the main pathological components of dementia

CHAIRPERSONS:

ALBERTO LLEÓ

Unidad de Memoria. Hospital de Sant Pau, Barcelona. Spain.

LUISA ALVES

Universidade NOVA de Lisboa. Portugal.

MALÚ GAMEZ TANSEY

*Center for Translational research in Neurodegenerative disease.
University of Florida. USA.*

Targeting immune dysfunction and chronic inflammation

TIAGO OUTEIRO

Goettingen University. Germany.

From biology to classification: understanding Parkinson's disease

CATHERINE MUMMERY

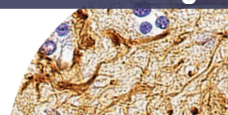
University College London. UK.

Beyond amyloid: emerging tau therapies in Alzheimer's disease

11.00 - 11.30



COFFEE BREAK & POSTERS



SCIENTIFIC PROGRAM

Personalized Interventions. Secondary prevention

11.30 - 13.00

SCIENTIFIC SESSION VI: NON-PHARMACOLOGICAL INTERVENTIONS

Non-pharmacological interventions. Here, we will discuss non-pharmacological interventions and the available evidence of how these address specific pathological components

CHAIRPERSON:

JOAQUIM FERREIRA

CNS – Campus Neurológico. University of Lisbon. Portugal.

PABLO MARTÍNEZ LAGE

Fundación CITA Alzheimer. Donostia. Spain.

Successful adaptation of the FINGER model in Southern Europe: From the GOINZ-ZAINDU pilot study to the CITA GO-ON trial

GIACOMO KOCH

Foundation Santa Lucia, Rome. Italy.

Personalized Neuromodulation of the Default Mode Network for Treatment of Alzheimer's Disease: Foundations and Next Steps

ARIANNE GRAVESTEIJN

Amsterdam UMC, The Netherlands.

Beyond Medication: The Role of Exercise and other non-pharmacological interventions in Managing Anxiety and Depression in Neurodegenerative Disorders

13.00 - 15.00



LUNCH & POSTERS

Personalized Interventions. Secondary prevention

15.00 - 16.30

SCIENTIFIC SESSION VII: DIGITAL THERAPIES IN ASSESSMENT AND INTERVENTIONS

CHAIRPERSON:

JOHN KRAKAUER

Champalimaud Foundation & Johns Hopkins University.

DANIELA PIMENTA DA SILVA

CNS, Lisboa. Portugal.

The role of exercise in prevention and treatment

ARKO GHOSH

Leiden University. The Netherlands.

Interpreting real world behavior captured on the smartphone

DINA KATABI

Massachusetts Institute of Technology, USA.

AI-Enabled Digital Biomarkers for Neurodegenerative Diseases (On-Line)

16.30 - 18.00



COFFEE BREAK & POSTERS

18.00 - 19.30

LIVE MUSIC & COCKTAIL

10.00 - 10.20

ARRIVAL AND SEATING OF ALL ATTENDEES

10.30 - 13.30

SESSION: PEOPLE LIVING WITH AD AND PD – THE PATIENT AT THE CENTER OF CARE AND THEIR ENGAGEMENT IN RESEARCH

CHAIRPERSON:

MARCELO MENDONÇA

Champalimaud Foundation, Lisbon. Portugal.

10.30 - 11.30

Presentations:

JOSEFA DOMINGOS

Parkinson's Europe and Young Parkies Portugal

MARIA DO ROSÁRIO ZINCKE

Alzheimer Europe and Associação Alzheimer Portugal

MARILÓ ALMAGRO

Confederación Española de Alzheimer y otras demencias (CEAFA). Spain.

11.30 - 12.00



COFFEE BREAK & POSTERS

Patient's perspective

12.00 - 12.30

**OFFICIAL ACT "INTERNATIONAL ALZHEIMER'S DAY"
BY HER MAJESTY QUEEN SOFÍA OF SPAIN**

12.30 - 13.30

ROUND TABLE

Patient associations:

JOSEFA DOMINGO

Parkinson's Europe and Young Parkies Portugal

MARIA DO ROSÁRIO ZINCKE

Alzheimer Europe and Associação Alzheimer Portugal

MARILÓ ALMAGRO

Confederación Española de Alzheimer y otras demencias (CEAFA). Spain.

KINA GARCÍA

Panel de expertos de personas con Alzheimer (PEPA).

ALICIA CAMPOS

Federación Española Parkinson.

Neurologists/Researchers:

ISABEL SANTANA

Faculdade de Medicina, Universidade de Coimbra. Portugal.

ALBERTO LLEÓ

Unidad de Memoria. Hospital de Sant Pau, Barcelona. Spain.

PASCUAL SÁNCHEZ-JUAN

Fundación CIEN, Madrid. Spain.

JOAQUIM FERREIRA

CNS – Campus Neurológico. University of Lisbon. Portugal.

Geneticists:

AGUSTÍN RUIZ

Fundació ACE, Barcelona. Spain.

13.30

END OF MEETING

GENERAL INFORMATION

CIEN FOUNDATION SECRETARIAT:



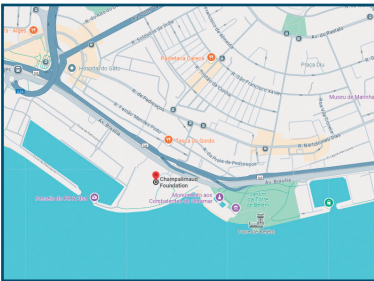
Almudena Flores
Beatriz Salado
Aina Frontera Sánchez
Ana Mulás Sierra
Laura Saiz Aúz
C/ Valderrebollo, 5 - 28031 Madrid.
congreso@fundacioncien.es
Phone: (+34) 91 385 22 00

CONGRESS SECRETARIAT:



OASIS EVENTS & TRAVEL SOLUTIONS
C/ Sor Ángela de la Cruz , 8 - 1º A - 28020 Madrid.
Phone: (+34) 91 555 11 19
www.viajesoasis.com / jsanchez@viajesoasis.com

VENUE:



Champalimaud Foundation
Av. Brasília, 1400-038 Lisboa, Portugal

ORGANIZERS



Fundação
Champalimaud

GOLD SPONSORS:



SILVER SPONSOR:



